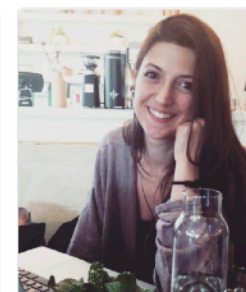
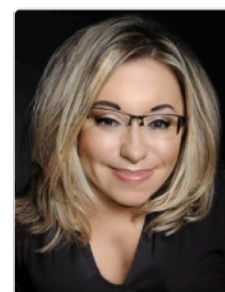
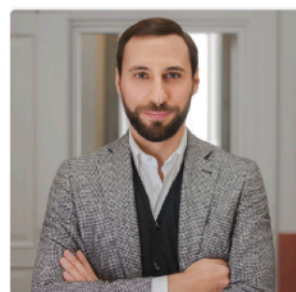
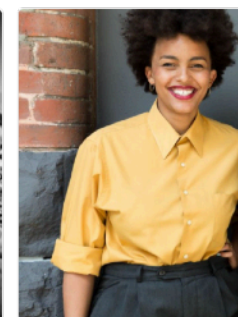
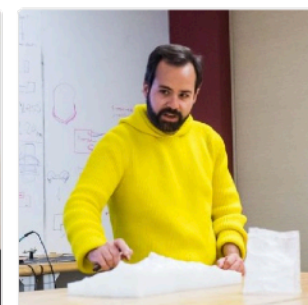
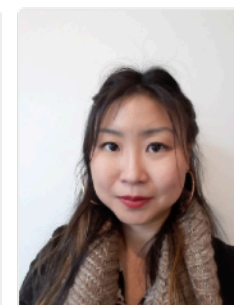
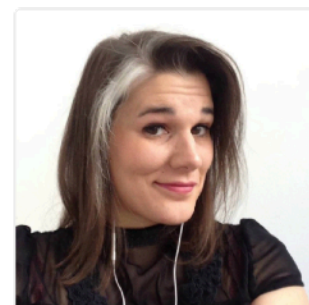


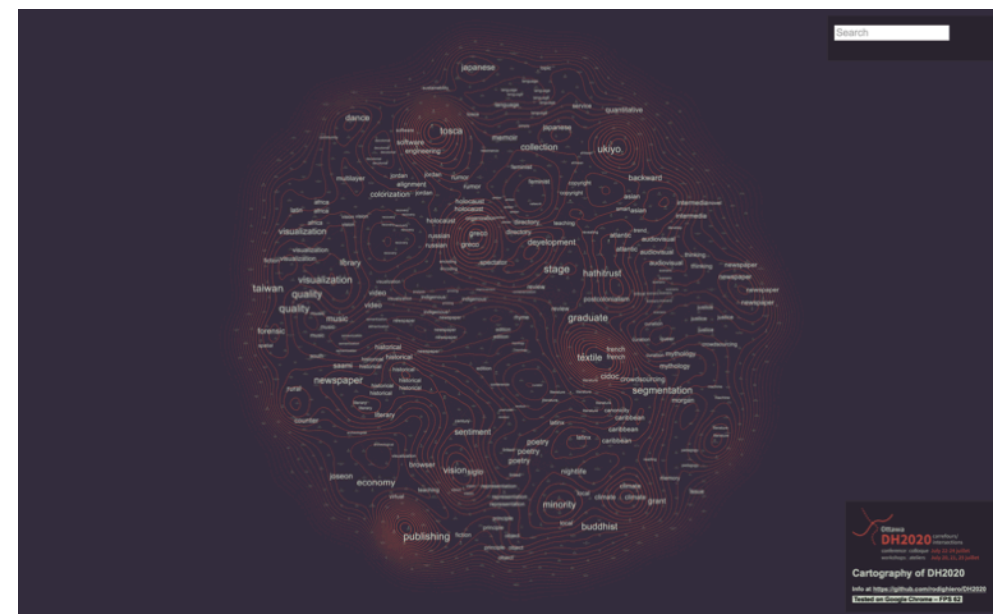
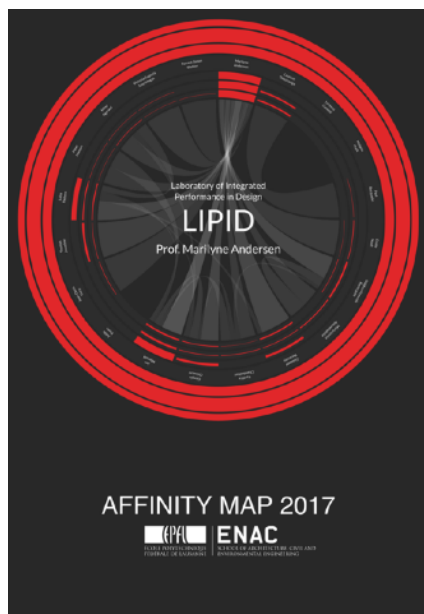
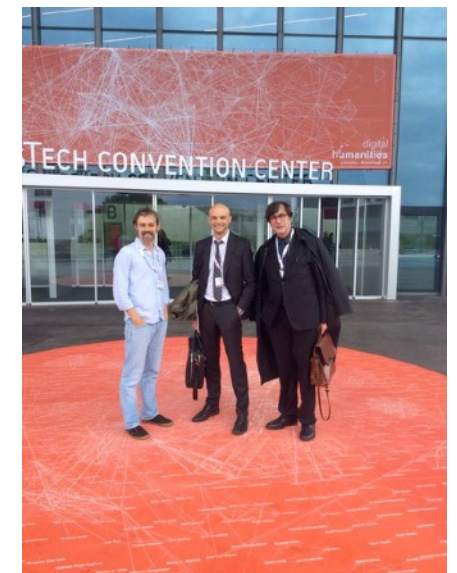
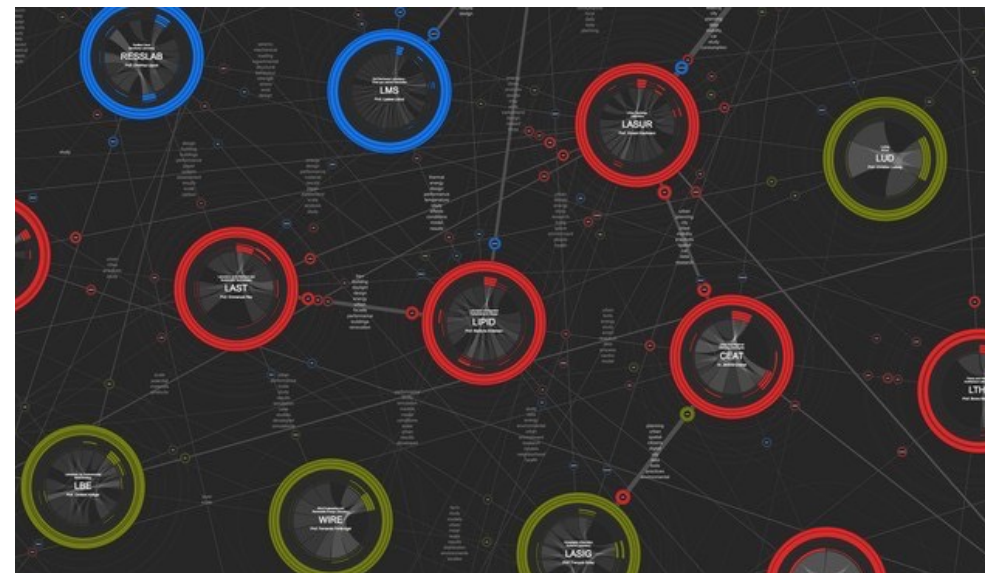
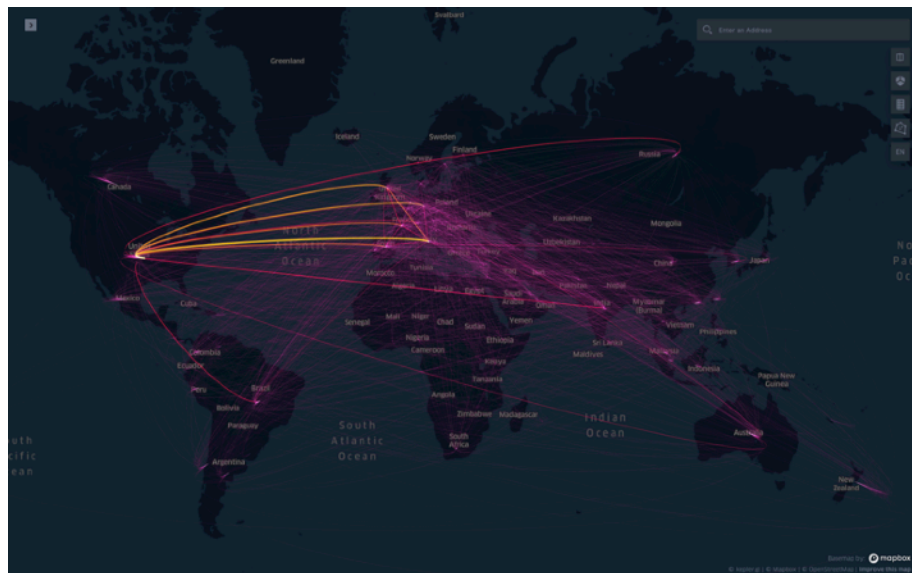
Mapping NISO Plus 2021

Dario Rodighiero
Harvard University

NISO Plus Conference
February 22-25, 2021



Metalab, Berkman Klein Center for Internet & Society



Mapping of Science



The moment public events went online, attendees felt the need for new **instruments to orientate** in scientific conferences.

I combines **network visualization** and **natural language processing**.

Speakers are situated on an imaginary **topographical terrain**.

Two conference speakers are close when they share a **dictionary**.

More info at <https://metalabharvard.github.io/projects/lexicalcarto/>





Lori Carlin



Carlo Scollo Lavizzari



Ginny Hendricks



Judy Bai



Dario Rodighiero



Joy Owango



Heather Joseph



Yvonne Campfens



Bill Kasdorf



Eleonora Presani



P
K

research
researcher

research
collaboration



- An instrument for the conference **speakers** who can explore their lexical context.
- An instrument for the conference **attendees** who can find talks by keyword search.
- An instrument for the conference **committee** who can organize panels automatically.

- Facilitate visual mapping
- Increase information precision
- Create scientific awareness
- Enable different scales



dario rodighiero

CARTOGRAPHIES
DES AFFINITÉS

<https://dariorodighiero.com>